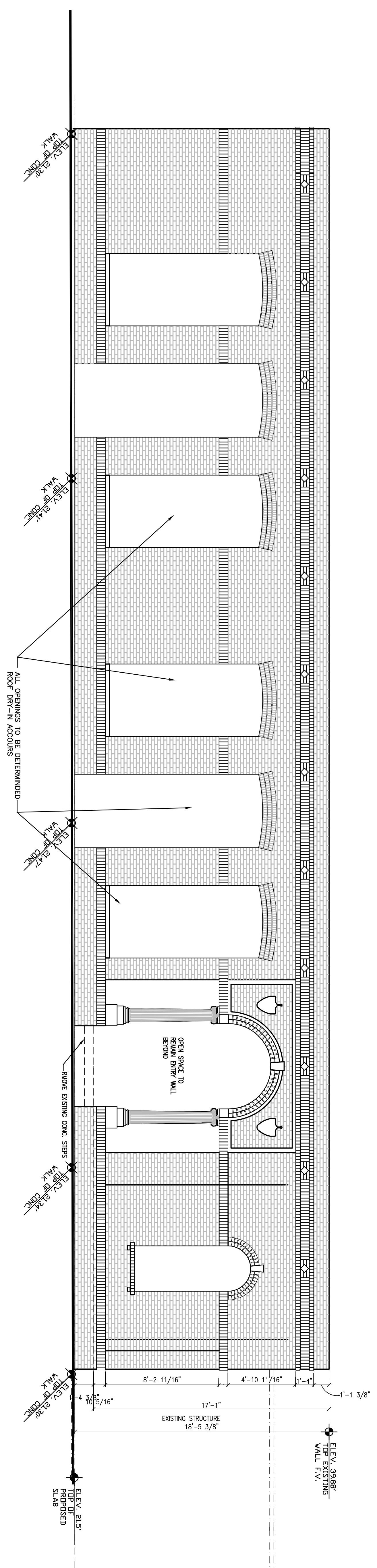


**B**  
**PROPOSED**  
**WEST ELEVATION**

SCALE: 1/4" = 1'-0"

**A**  
**EXISTING**  
**WEST ELEVATION**

SCALE: 1/4" = 1'-0"



SHEET NO. <b>4</b>	17 AUG 2010	HP 09179
-----------------------	-------------	----------

**ALTERNATIONS AND ADDITIONS**  
 TO THE BUILDING OF  
**FERLITA MACARONI FACTORY**  
 1607 22th STREET  
 YBOR CITY, TAMPA FLORIDA

  
**HAFNER | FERLITA ARCHITECTS, INC.**  
 Architects and Planners  
 1428 SWANN AVENUE, TAMPA, FLORIDA 33606 813-253-0421 FAX: 813-253-6280  
 www.hafnerferlita.com AAC000737

Joseph C. Hafner, A.I.A.  
 Kenneth C. Ferlita, A.I.A.  
 COPYRIGHT © 2008  
 HAFNER - FERLITA ARCHITECTS, INC.  
 HAFNER-FERLITA ARCHITECTS, INC. SHALL BE RESPONSIBLE FOR ALL ARCHITECTURAL WORK AND DESIGN CREATED BY HAFNER - FERLITA ARCHITECTS, INC.

THESE PLANS ARE THE PROPERTY OF HAFNER - FERLITA ARCHITECTS, INC. AND SHALL BE RETURNED UPON COMPLETION OF THE PROJECT. USE OR COPY IS PERMITTED BY CONTRACT ONLY. ANY CHANGES TO THESE PLANS, REGARDLESS OF HOW MADE, WITHOUT THE WRITTEN APPROVAL OF HAFNER-FERLITA ARCHITECTS, INC. OR ANY OTHER STRUCTURE EXECUTED FROM THESE PLANS WITHOUT THE EXPRESSED APPROVAL OF HAFNER-FERLITA ARCHITECTS, INC. SHALL BE AT THE RISK OF ANY PERSON OTHER THAN HAFNER - FERLITA ARCHITECTS, INC. HAFNER-FERLITA ARCHITECTS, INC. SHALL NOT BE RESPONSIBLE FOR ANY UNEXPECTED DAMAGE, LOSS, OR LITIGATION BY INTERESTED PARTIES IN THE PROJECT IF SUCH OPERATIONS ACCORD WITH THESE PLANS. THEY SHOULD BE READ CAREFULLY FOR ADDITIONAL CONDITIONS.